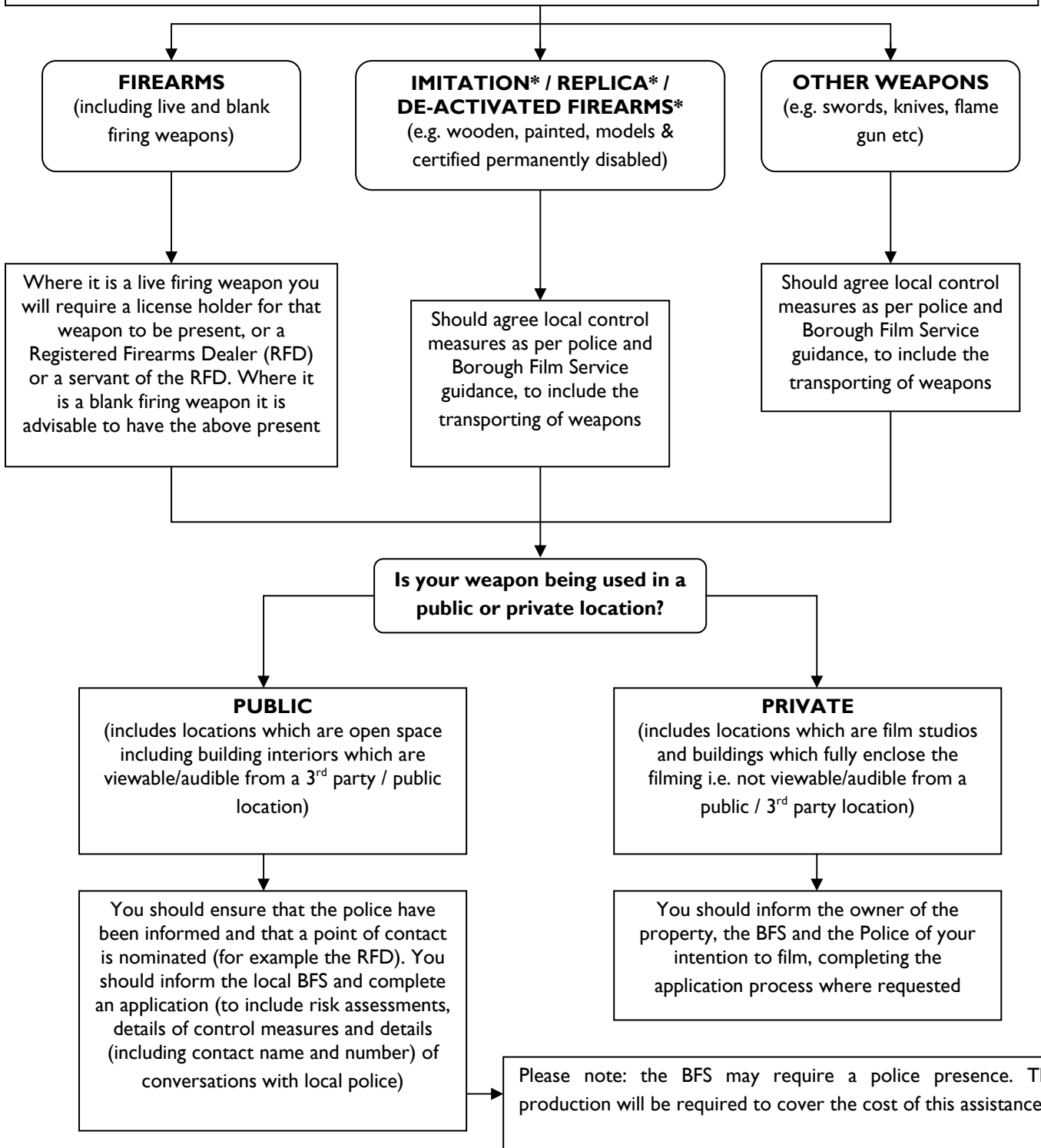


**GUIDANCE FOR SCENES INVOLVING A WEAPON OF ANY KIND (INCLUDING ALL IMITATION WEAPONS)**

You must consult and comply with the HSE information sheet 20 available at [www.hse.gov.uk/pubns/etis20.pdf](http://www.hse.gov.uk/pubns/etis20.pdf)  
 A full and comprehensive risk assessment must be completed & supplied  
**By raising awareness of your activity to BFS/Police, the likelihood of an armed police deployment should be greatly reduced**



\* Imitation – anything which has the appearance of being a firearm (see S.57(4) Firearms Act 1968)

\*Replica (Realistic Imitation firearm) - where it is indistinguishable, for all practical purposes, from a real firearm and is neither deactivated or an antique (see S.38 Violent Crime Reduction Act 2006)

\* Deactivated - where the mechanisms to cause harm have been removed or permanently disabled and it has been certified as deactivated by a proof house (see S.8 Firearms (Amendment) Act 1988)